

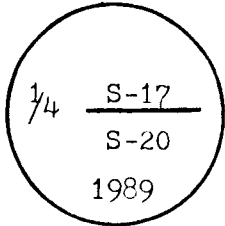
057197

LARAMIE COUNTY  
CHEYENNE, WY.

CERTIFIED LAND CORNER RECORDATION

'89 MAY 8 PM 4 38

DESCRIPTION OF CORNER EVIDENCE FOUND, AND ORIGINAL RECORD (if known)



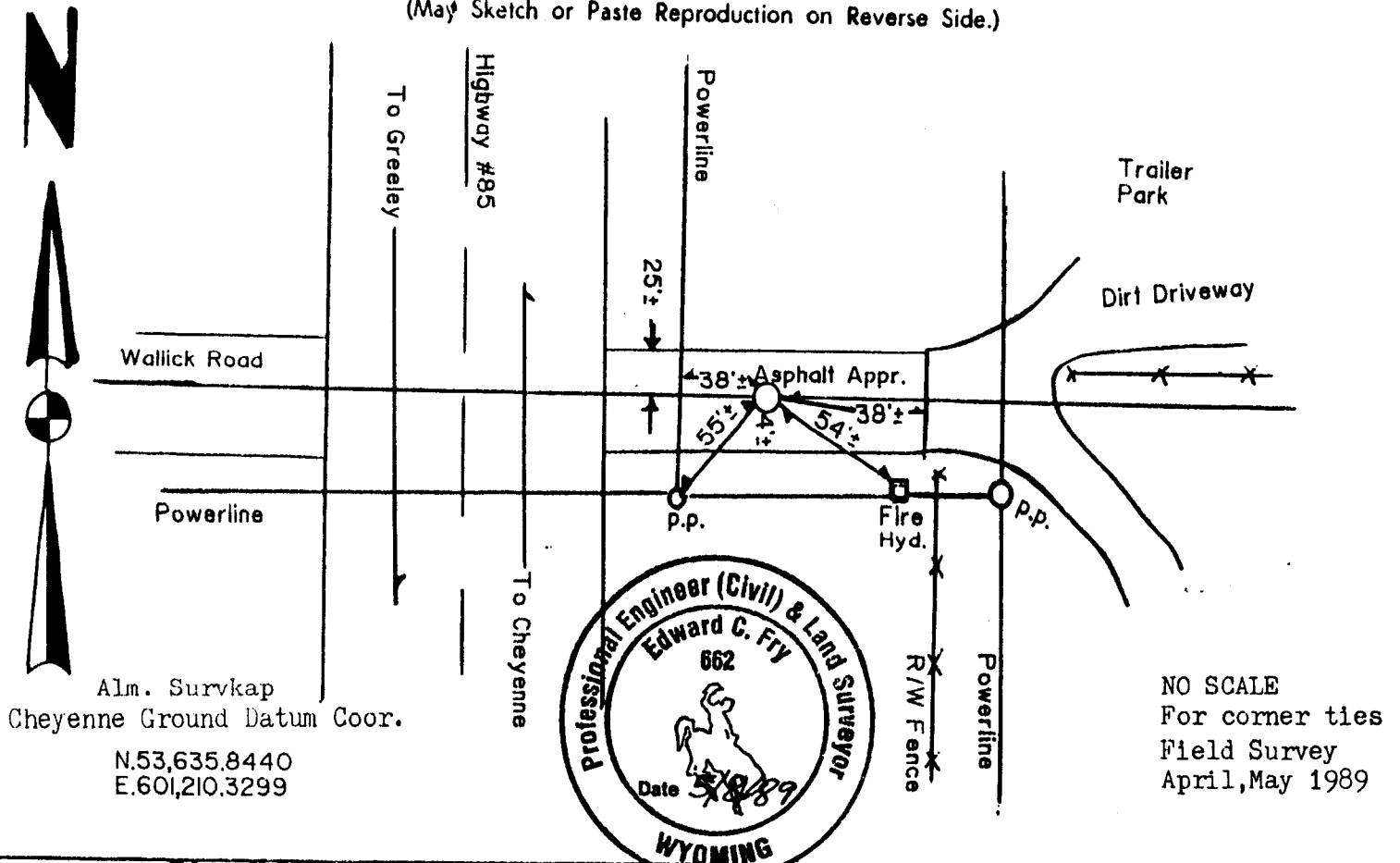
Found no evidences of corner. The G.L.O. monument is described as a granite stone 15"x6"x6" set in the year 1870.

T 13 N R 66 W

DESCRIPTION OF MONUMENT AND ACCESSORIES ESTABLISHED TO PERPETUATE THE ORIGINAL LOCATION OF THIS CORNER:

Set a 2"x30" O.D. galvanized iron pipe with a aluminum survkap with one quarter and section numbers stamped on it. Set six inches below the road grade. Used single propoprntional measured to locate the quarter corner.

SKETCH, WITH COURSE AND DISTANCE TO ADJACENT CORNER IF DETERMINED IN THIS SURVEY. (May Sketch or Paste Reproduction on Reverse Side.)



Alm. Survkap  
Cheyenne Ground Datum Coor.  
N.53,635.8440  
E.601,210.3299

NO SCALE  
For corner ties  
Field Survey  
April, May 1989

I, Edward C. Fry certify that I have carefully ~~performed~~ reviewed the work done on the diagrammed corner as reported on this recordation form and approve the same.

*Edward C. Fry*  
Signature of Surveyor

P.E./L.S.#662  
Registration No.

STATE OF WYOMING,  
Office of Clerk and Recorder,  
County of \_\_\_\_\_

This "corner record" was filed for record on the \_\_\_\_\_ day of \_\_\_\_\_, 19\_\_\_\_, was noted on the cross-index plat and is assigned page No. \_\_\_\_\_, in book No. \_\_\_\_\_.

County Official	
Cross Index No. <u>N-7</u>	T. <u>13</u> R. <u>16</u> Mer.
_____	T. _____ R. _____ Mer.
_____	T. _____ R. _____ Mer.
_____	T. _____ R. _____ Mer.
_____	T. _____ R. _____ Mer.
_____	T. _____ R. _____ Mer.
_____	T. _____ R. _____ Mer.

BOOK 1273

Met 721

